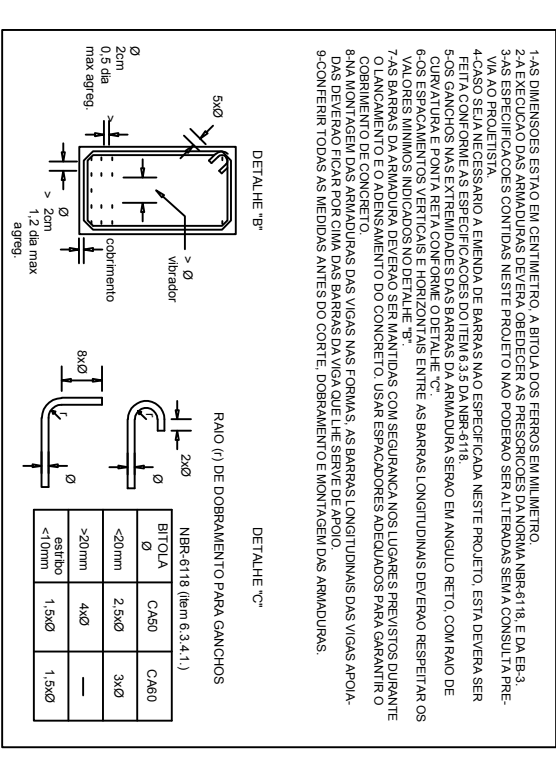
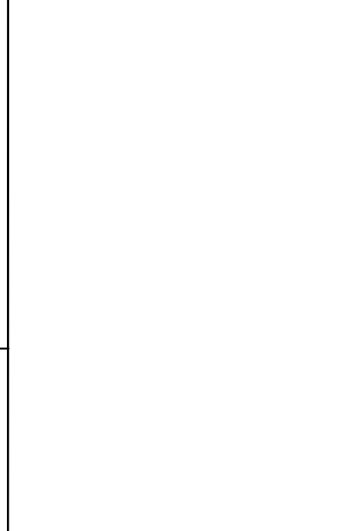
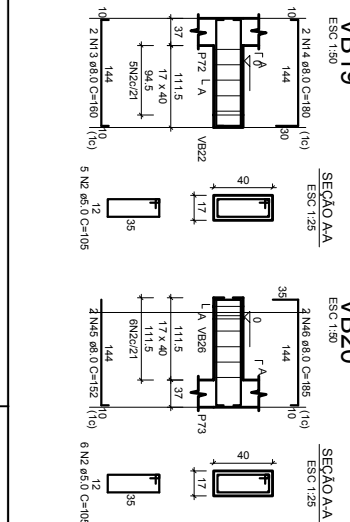
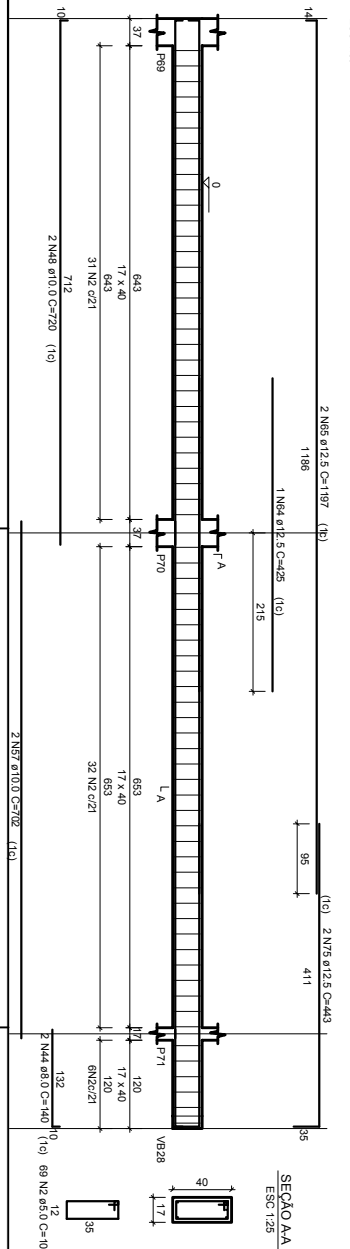
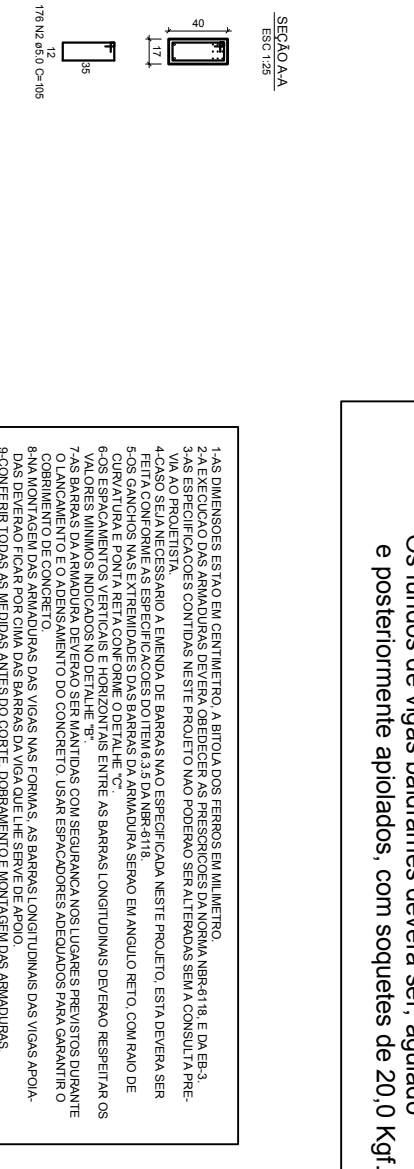
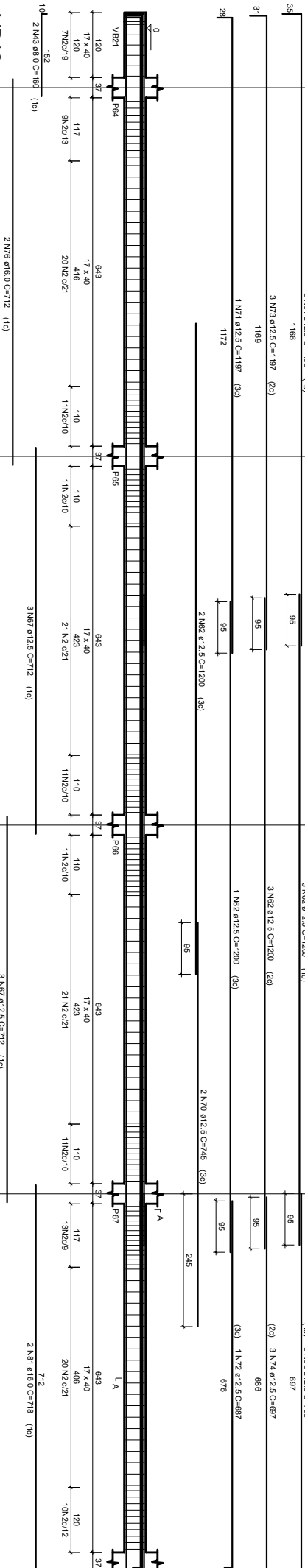


**OBSERVAÇÕES:**

FCK=200,0 Kg/cm<sup>2</sup> para fundação.  
FCK=250,0 Kg/cm<sup>2</sup> para a estrutura.  
Recobrimento de pilares = 2,5 cm.  
Recobrimento de vigas = 2,5 cm.  
Recobrimento de vigas baldrame = 2,5 cm.  
Capacidade de laje pré-moldada = 5,0 cm (Mínimo)  
Slump 5 ± 1 cm.

Os fundos de vigas baldrame deverão ser, agulhado e posteriormente apoiados, com soquetes de 20,0 Kg/f



Age	N	Sex	Length	C.G.Wt.
60	1	M	206	106
59	1	M	206	106
58	1	M	206	106
57	1	M	206	106
56	1	M	206	106
55	1	M	206	106
54	1	M	206	106
53	1	M	206	106
52	1	M	206	106
51	1	M	206	106
50	1	M	206	106
49	1	M	206	106
48	1	M	206	106
47	1	M	206	106
46	1	M	206	106
45	1	M	206	106
44	1	M	206	106
43	1	M	206	106
42	1	M	206	106
41	1	M	206	106
40	1	M	206	106
39	1	M	206	106
38	1	M	206	106
37	1	M	206	106
36	1	M	206	106
35	1	M	206	106
34	1	M	206	106
33	1	M	206	106
32	1	M	206	106
31	1	M	206	106
30	1	M	206	106
29	1	M	206	106
28	1	M	206	106
27	1	M	206	106
26	1	M	206	106
25	1	M	206	106
24	1	M	206	106
23	1	M	206	106
22	1	M	206	106
21	1	M	206	106
20	1	M	206	106
19	1	M	206	106
18	1	M	206	106
17	1	M	206	106
16	1	M	206	106
15	1	M	206	106
14	1	M	206	106
13	1	M	206	106
12	1	M	206	106
11	1	M	206	106
10	1	M	206	106
9	1	M	206	106
8	1	M	206	106
7	1	M	206	106
6	1	M	206	106
5	1	M	206	106
4	1	M	206	106
3	1	M	206	106
2	1	M	206	106
1	1	M	206	106

	ACO	DIAM	C/TOTAL (mm)	PESO+10% (kg)
CA50	6.3	237.4	64.0	54.0
	8.0	498.8	134.4	114.0
	10.0	198.1	530.9	563.0
	12.5	92.5	111.8	194.3
CA60	16.0	1232.3	208.7	
	5.0			
PESO TOTAL				
CA50	1172.5			
CA60	208.7			

Vol. de concreto total (C-25) = 14,44  
Área de forma total = 207,32 m<sup>2</sup>